

## Overview

**JReport Designer** is a 100% Java, swing-based report design tool that facilitates rapid report development, precise layout, flexible output, and actionable reporting, regardless of your OS or hardware configuration. JReport Designer provides a highly flexible report development environment that is built for report designers who need to create and deliver reports from within any Web application, and want to implement their solution without custom coding and resource intensive maintenance. JReport Designer offers a number of features and functions that speed the report creation and deployment process, including:

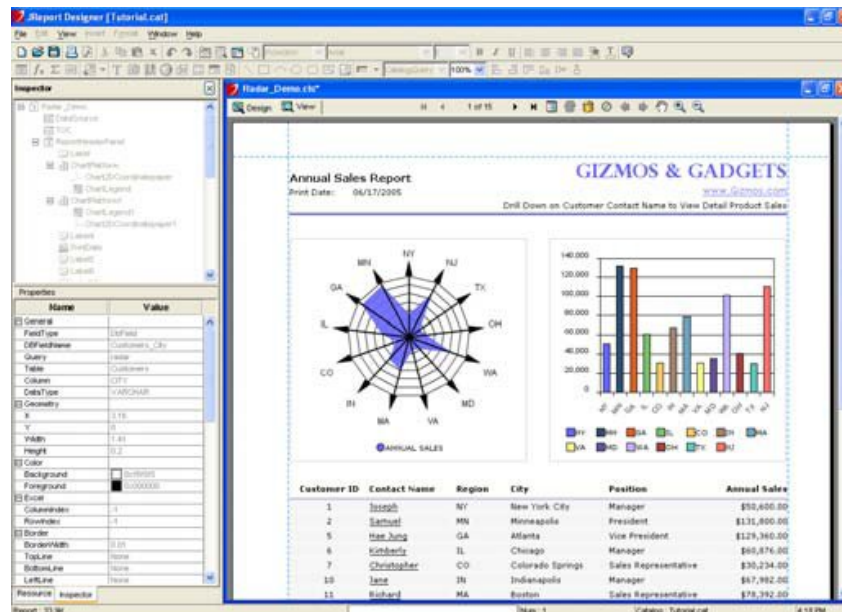
- An intuitive visual design environment
- Re-usable report components
- Hundreds of ready-to-use objects, charts & tables
- The ability to access any data source
- The ability to use data from different sources in the same report

These tools empower developers with the ability to build reports that quickly and efficiently deliver information to end users via any web application running in any environment.

## Rapid Design Environment

### Intuitive Interface

JReport Designer's intuitive and feature-rich interface provides the flexibility needed to design sophisticated reports and share information in the format that is most appropriate to the task at hand. Report designers can simply drag-and-drop report elements from the Resource Viewer. Alternatively, developers can use one of JReport's easy-to-use Report Wizards to guide them through the processes of selecting data sources, creating queries, and designing a report layout. A WYSIWYG interface and on-demand data views enable users to view report outputs within the design environment.



*Easily modify any report component property with one-click simplicity*

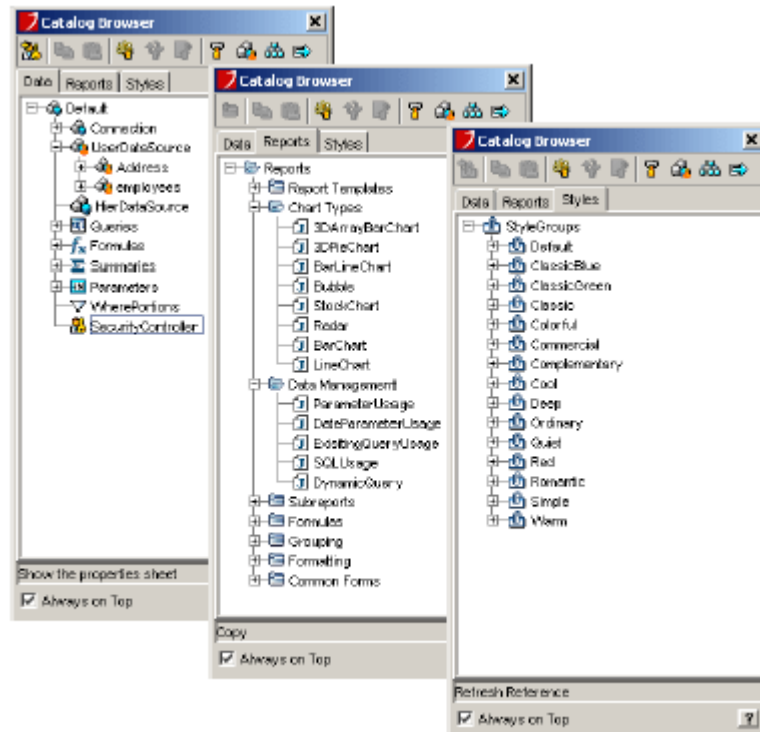
## One-Click Modification

JReport's Report Inspector makes report design and modification hassle-free. Report designers can use the Report Inspector to:

- Quickly identify and edit report objects and their Properties.
- Speed report modification by grouping and editing multiple objects with common properties at the same time.

## Reusable Report Components

Reusable components are stored in a user-defined Catalog, which expedites the design process by providing a central location for sharing and editing commonly used objects. Database connections, queries, formulas, and parameters are maintained within the Catalog. Since these report objects are only created once and reused as needed, developers are able to generate reports more quickly. And because developers spend less time building reports, they are able to allocate resources to other mission-critical tasks.



*Report design is facilitated with JReport catalogs - repositories for re-usable report objects.*

## Hassle-free Component Maintenance

JReport Designer helps developers efficiently maintain templates and ensure report consistency by automatically propagating changes of a component to all instances of that component. Report components can also be cross-referenced among report templates and other data objects. Should a resource name or property be changed, JReport Designer prompts developers to rename all references to that component, preventing them from becoming obsolete. The JReport Designer Catalog Doctor also provides a fast means for analyzing report objects and catalog components to identify any disparities.

## Crystal Report Converter

JReport Designer's integrated Crystal Report Converter can easily generate a JReport template from any Crystal Report. These templates are completely editable, providing all the flexibility and design functionality available in JReport. The JReport Crystal Report Converter can convert single Crystal reports or perform batched conversion, leveraging existing report templates to save developer time.

## Flexible, Precise Report Design

### Access Any Data Source

JReport Designer is able to display information from, and allows users to easily connect to, virtually any data source, including:

- Relational databases
- Data warehouses
- Java objects
- XML data types
- Metadata layers

It also provides support for user-defined and hierarchical data sources, enabling enterprises to quickly and easily report on data from anywhere in their organization. JReport Designer is uniquely capable of generating reports based on the data structure, inherent in hierarchical data sources like XML and Enterprise Java Beans (EJBs). To offer users a concise view of disparate data in a single report, JReport Designer is able to simultaneously access multiple data sources.

### Easy Connectivity and Querying

Connecting to and accessing data is easy. Database objects are accessible through JDBC and ODBC connections, or via a user-defined data source. JReport's Query Editor Wizard can dynamically build queries to facilitate data access. Or, report designers can:

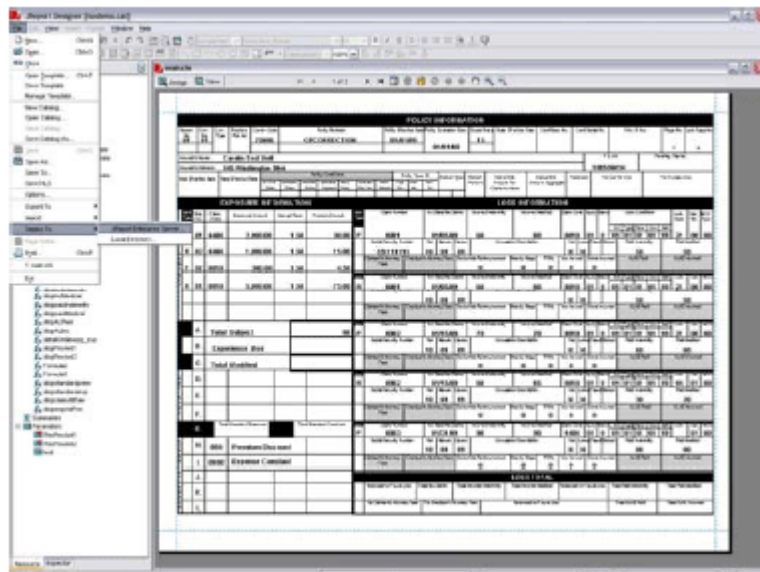
- Import their own SQL statements
- Use JReport's 300+ built-in formulas to generate calculations and business logic
- Create custom logical and mathematical expressions for flexible query and calculation building

### Precise Page Control

Designers can control standard layout properties and advanced formatting like the ability to break an object across pages or position it on a new page. Page breaks can be set horizontally and vertically to accommodate any layout needs, and the support of true-type fonts ensures a clean, high-resolution output.

### Pixel-Perfect Layout

The JReport Designer environment enables precise control over every section of a report, including titles, headers, footers, and body content. This control ensures that data is presented in a coherent, easy-to-read format that matches existing corporate design guidelines. Report objects, including charts, graphs, and sub-reports, can be positioned anywhere within a report, and multiple objects can be selected and aligned vertically or horizontally for pixel-perfect arrangement.



*With JReport Designer, even the most sophisticated reports can be created with pixel-perfect layout.*

## Real-time Report View

The JReport Designer interface also provides a “view during design” mode so the exact report output can be previewed at anytime during the design process. This enables designers to periodically see what the report will look like for the end user with real data, and if necessary, make adjustments to the design.

## Charting Made Easy

JReport Designer’s Chart Wizard simplifies the process of creating complex charts. The Chart Wizard prompts developers to select data, sorting and grouping criteria, and formatting preferences, and automatically generates a chart based on those settings. JReport includes more than 40 two and three-dimensional chart types that can be viewed as graphic images or dynamic applets. All JReport charts are actionable; users can drill down, up or across them to view related information or data.

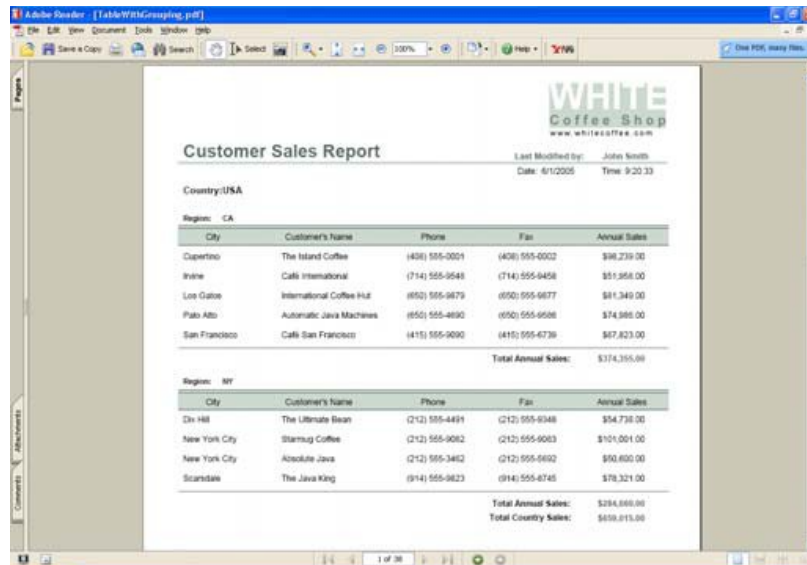
## Sophisticated Security

JReport’s security features allow designers to define user security permissions at design time, enabling one report template to serve the needs of multiple users with different permissions. JReport supports single sign-on (SSO); it can authenticate users at run-time by synchronizing with existing directory servers (LDAP, Microsoft Active Directory, Microsoft Site Server, Lotus Domino, and Novell Directory Server), or by using JReport’s internal security to both authenticate users and authorize access down to the individual cell level. After a user is authenticated/authorized, they are granted access to specific pages, columns, rows, or cells within a report. Based on a user’s identity, only certain data may be displayed within a report.

## Flexible Report Output

Any report can be output to a variety of high-resolution formats, including:

- DHTML and HTML for seamless embedding in Web applications
- PDF for high-resolution printing
- XML for electronic processing
- Microsoft Excel (with full support for over 160 functions and charts)
- RTF or CSV for easy importation into applications like Microsoft Word
- Email or fax for direct distribution to recipients



White Coffee Shop  
www.whitecoffee.com

Customer Sales Report  
Last Modified By: John Smith  
Date: 6/12/05 Time 9:20:33

Country: USA  
Region: CA

City	Customer's Name	Phone	Fax	Annual Sales
Cupertino	The Island Coffee	(408) 555-0001	(408) 555-0002	\$98,239.00
Irvine	Café Internacional	(714) 555-9548	(714) 555-8458	\$51,968.00
Los Gatos	International Coffee Hut	(650) 555-9879	(650) 555-6877	\$81,349.00
Palo Alto	Automatic Java Machines	(650) 555-4090	(650) 555-9598	\$74,880.00
San Francisco	Café San Francisco	(415) 555-9090	(415) 555-6739	\$67,823.00
Total Annual Sales:				\$374,355.00

Region: NY

City	Customer's Name	Phone	Fax	Annual Sales
Elk Hill	The Ultimate Bean	(212) 555-4481	(212) 555-9348	\$94,738.00
New York City	Starmug Coffee	(212) 555-9092	(212) 555-6003	\$101,001.00
New York City	Absolute Java	(212) 555-3482	(212) 555-5892	\$90,600.00
Scarsdale	The Java King	(914) 555-9823	(914) 555-8745	\$78,321.00
Total Annual Sales:				\$354,660.00
Total Country Sales:				\$629,015.00

JReport’s flexible output options enable reports to be exported to the most relevant format.

## Actionable Reports

### Dynamic and Cascading Parameters

JReport Designer frees report designers from the need to maintain static prompt lists for each individual report. Dynamic parameters can be defined at run time or passed directly from the application to control the report results returned. JReport can automatically populate parameter prompts based on database values, or developers can enter their own parameter criteria. Developers can define the sequence of pop-up parameters and cascading parameters, where the value selected for the primary parameter controls the values available in subsequent parameters. Like all JReport Designer objects, parameters can be shared among multiple reports.

### Interactive Web Controls

Report designers can embed interactive GUI objects directly into Web-based reports to enable users to dynamically control data views. These objects can be defined to perform actions such as sorting, filtering, printing, and exporting. Using JReport, designers can import a variety of components into their reports

- Images that give a report a desired look and style.
- Buttons that control report functions, like sorting, filtering, or exporting
- Text fields for custom user input
- Check boxes and radio buttons for straightforward option selection
- Drop-down lists to make parameter selection easy

The screenshot shows a web browser window displaying a report titled "Customer Orders Report" from DigitalSTORE. The report is divided into two sections, one for Customer ID 1 and one for Customer ID 2. Each section includes contact information and a table of orders with columns for ID, Product Brand Name, Order Date, Due Date, Ship Date, Total of Goods, and Total. The first customer's orders are for HP products, and the second customer's orders are also for HP products. The report includes interactive elements like a filter sidebar on the left and a "Payment Outstanding" section at the top.

ID	Product Brand Name	Order Date	Due Date	Ship Date	Total of Goods	Total
1007	HP	6/3/2005	6/6/2005	6/7/2005	\$2,375.00	\$2,375.00
1008	HP	6/3/2005	6/6/2005	6/9/2005	\$629.50	\$629.50
1009	HP	6/6/2005	6/9/2005	6/10/2005	\$1,193.50	\$1,193.50
1010	HP	6/6/2005	6/11/2005	6/12/2005	\$1,637.50	\$1,637.50
1011	HP	6/11/2005	6/14/2005	6/15/2005	\$1,718.75	\$1,718.75

ID	Product Brand Name	Order Date	Due Date	Ship Date	Total of Goods	Total
2012	HP	6/1/2005	6/4/2005	6/5/2005	\$2,543.50	\$2,543.50
2013	HP	6/4/2005	6/7/2005	6/8/2005	\$1,965.00	\$1,965.00
2014	HP	6/6/2005	6/9/2005	6/10/2005	\$1,008.00	\$1,008.00

*JReport enables interactive reporting by allowing designers to embed dynamic parameters and web controls into any report*

### Fast Report Navigation

Reports created with JReport Designer can be enabled with a dynamic table of contents that facilitates one click access to any report component. Multi-page reports can be viewed sequentially or users can jump directly to a specific page. In addition, a powerful search function allows users to quickly locate critical data points for faster decision-making. JReport also supports embedded hyperlinks to provide end users with convenient access to related reports or information.

## Technical Requirements

- Intel Pentium III or faster
- Windows 9x/2000/NT 4.0/XP, Linux, UNIX
- 256 MB of RAM minimum
- 100 MB of available hard disk space
- Java VM JDK 1.4 or above

## Corporate Contact

### **Jinfonet Software**

9420 Key West Avenue

Suite 310

Rockville, MD 20850

P: 240-477-1000 | F: 240-465-0355

[info@jinfonet.com](mailto:info@jinfonet.com)

[www.jinfonet.com](http://www.jinfonet.com)

