

## Highlights

JDashboard delivers interactive data visualization and analysis to users. As an integrated component of JReport's embedded analytics and reporting platform, JDashboard displays rich visualizations of your data using our vast library of charting elements such as maps, crosstabs, tables and even live motion charts. These can all be combined with a robust set of interactions. With JDashboard, users can take data exploration to the next level by creating interactive views of business performance.

## Rich Visualization

### Interactive Data Analysis

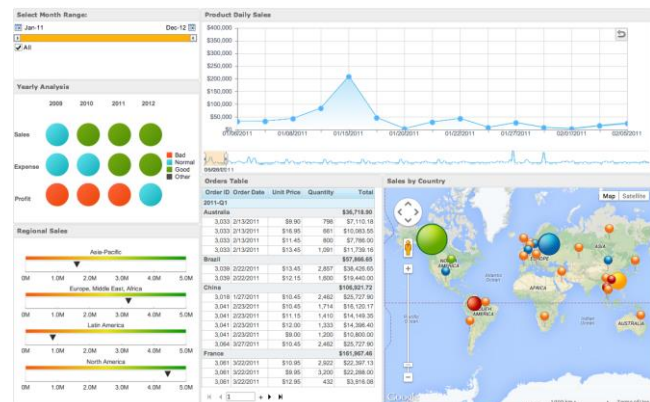
JDashboard allows you to combine reporting, interactive analysis, and maps from JReport's central library of shared widgets. Users perform visual analysis directly within your dashboards and can answer "what-if" questions by applying cascading parameters, filters, or sliders. Data can also be expanded, collapsed or grouped to explore information from alternate perspectives.

JReport users are empowered to make the best decisions as

JDashboard lets them

switch between different visualization options to better spot trends and anomalies. For example, a crosstab display can easily convert into different chart types.

JDashboard lets users take control of your data to create custom dashboards for managing operations and performance.



## Integrated Visual Analysis

Visual Analysis integrates with JDashboard to support powerful data analysis within dashboards. Charts, tables, crosstabs, control components (e.g., filters, parameters, etc.), and Visual Analysis can all be easily assembled within the same dashboard. Visual Analysis improves the way data is presented by providing smart layout options that allow users to scale the data in a chart by height, width or both, while automatically formatting the layout.

## Geo Analysis

JDashboard provides geographic visualization and analysis by overlaying customized areas and markers onto maps in OpenStreetMap and Google Maps. Conditional properties such as shape, size, color and label can be adjusted to provide an understanding of the data at a quick glance. Geo Analysis extends traditional data analysis on static maps, where zooming and panning are common, to more dynamic methods of interacting with geographic data. Analyze data using a familiar map interface and drill down hierarchies containing countries, states, counties and cities.

## Chart Types and Styles

Charts are an essential tool for business intelligence and JDashboard provides access to more than 40 different chart types and styles. In addition to the standard charts like bar, line, pie and scatter charts, JDashboard also allows you to work with more advanced charts including heat map, bullet, spark line, bubble, gauge, doughnut and other charts.

JReport supports the option to use live charts in dashboards including motion, scrollable, and real time charts that let you dynamically view data trends over time. Motion charts use auto-playable parameters to show for example, month-by-month changes over the course of a year for easy analysis of historical data. Scrollable charts are useful when there is too much data to be viewed at once and lets you zoom into a subset of data. Furthermore, real time charts display live, incremental data that is automatically updated to reflect changes. Real time charts are used for monitoring application metrics, system performance, or other real time data sources.



## HTML5 Support

JDashboard supports HTML5 technology for dashboard visualization widgets, providing rich interactivity and faster performance. This flexibility extends the ability to meet any user requirement or deployment scenario and also gives the option to deploy in a range of client environments including Apple iOS, Windows and Linux.

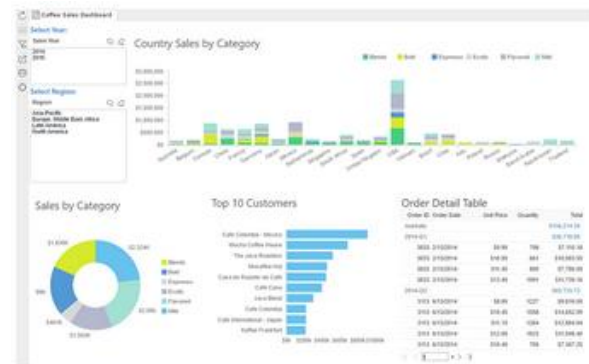
## Ease of Use

### Streamlined Dashboard Design

JDashboard provides a drag and drop framework for quick and easy dashboard design, and increased usability. Adding visualizations to JDashboard is intuitive as prebuilt chart widgets organized in a sharing library allow users to quickly create customized views. Existing reports and charts can be used in JDashboard and added directly either as a full report tab or as individual charts within a dashboard.

### On-Screen Interactions

JDashboard provides many types of on-screen interactions so users can quickly identify, shape, and visualize the subset of the data most relevant to the discovery process. Users can apply filters, slider controls, cascading parameters, drop down menus, drill downs, dimension switching,



and conditional formatting to any data set within the dashboard. JDashboard makes it simple to drill down into the details of dashboard charts, tables, and even map visualizations to give a more thorough view of your data. You can also drill up along the hierarchy to get a summary view of the data.

### Flexible Parameters

JDashboard supports cascading parameters where the selection of one parameter affects subsequent parameter choices. For example, you could have cascading parameters to choose values for country, state and city. You also have the flexibility to specify parameters for the entire dashboard, for a subset of widgets or for a single widget to satisfy any design requirements.

## Dashboard Widget Synch

A group of charts displayed within in JDashboard can be dynamically connected so that related visualizations on the dashboard will refresh to reflect interactions and consistency with related changes. For example, when working with a dashboard that shows different product types, selecting one specific product type will update the entire dashboard to show only the selected product type. JDashboard gives you the control to turn this feature on or off at the widget level. In addition, any change in the data set will automatically update all related charts to maintain a synchronized data view.

With JDashboard, you can refresh your entire dashboard at anytime on-demand with just one click of the refresh icon. Developers can also set dashboard widgets to automatically refresh at pre-set intervals so that the data is always current and synchronized with operational data sources.

## Governance & Collaboration

Chart widgets created by developers and administrators can be published to a central JReport library for immediate use in JDashboard. Building your dashboard is as easy as dragging over shared chart widgets from a library without having to create them, connect them to a data source, or setting detailed styling attributes. Chart widgets in the library are not copied onto dashboards, but rather referenced so approved updates are automatically reflected in all of the dashboards referencing that widget. Additionally, JDashboard offers chart control options allowing administrators to expose a subset of control options to users.

The centralized sharing library in JReport is an open system that also provides functionality for publishing 3rd party APIs and widgets like Google Maps and OpenStreetMap, or external web pages. These can be added to the central library for convenient integration and customization of external data sources.

## Dashboard Delivery

### Flexible Export Capabilities

JDashboard provides the flexibility for individual widgets or entire dashboards to be exported in formats such as PDF, Excel, CSV, HTML5, and more. Individual widgets and dashboards can also be delivered to other users through a number of different mediums like email, or printed for greater accessibility.



### JReport Mobile

View your dashboards anytime, anywhere directly from your iPad or iPhone with JReport Mobile. The app's native iOS implementation allows you to intuitively work with data using touch and gestures for on-the-go exploration and visualization of your data through interactive, animated charts. You can also scroll through detailed data in the rows and columns of your crosstabs and tables for easy data discovery. JReport Mobile empowers field staff and on-the-go users to make better business decisions.

## JDashboard: Easy to Create, Easy to Deliver

JDashboard empowers you to interact with your data providing a platform for rich visualization and intuitive analysis. The drag and drop framework and easy to use layouts facilitate the design process for developers and business users alike. Combining powerful on-screen analysis tools with illustrative visualizations to display data, JDashboard helps you make better, more informed business decisions. [Check out our JDashboard videos](#) for more information.



Copyright © 2016 Jinfonet Software, Inc.

Jinfonet Software  
2275 Research Blvd  
Rockville, MD 20850  
+1 240-477-1000  
[www.jinfonet.com](http://www.jinfonet.com)