

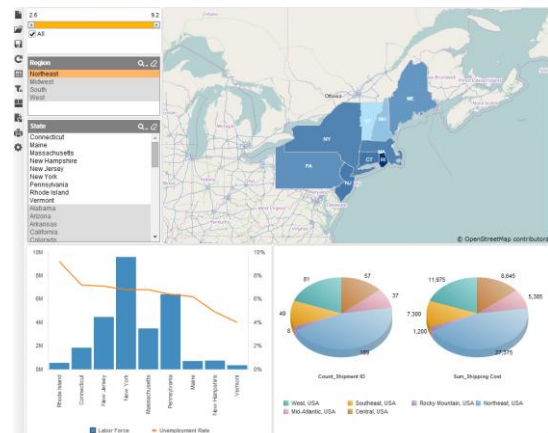
## Highlights

JReport 13.1 focuses on new geographical tools for data visualization, enhanced data analysis and presentation in dashboards and reports, as well as greater performance and scalability when visualizing very large data sets. Visual Analysis, which provides agile, self-service interactive data analysis, is also improved in this new release through smart layout capabilities. With these new features, users now have unparalleled support for large-scale geographical data visualization that is all backed by JReport's proven, embeddable, enterprise-ready reporting engine. Highlights in JReport 13.1 include:

- **Visual Analysis + JDashboard:** Visual Analysis components now supported in dashboards for in-depth, agile data analysis.
- **Distributed joins:** Mash-up multiple data sources within a single component.
- **Full multi-tenancy:** Organizational administrators control organization-level security and resource management.
- **Formulas:** Runtime formulas for groups & aggregations in Ad Hoc Reporting.
- **Data sources:** New support for EnterpriseDB, including stored procedures.

## Geo Analysis

JReport 13.1 enhances geographic based visualization and analysis by overlaying markers and bordered areas onto maps supported in OpenStreetMap and Google Maps. Customize markers and areas by conditional colors, sizes, shapes and labels. Create map visualizations that give users a deeper understanding of the data at a quick glance. Geo



Analysis extends traditional data analysis on static maps, where zooming and panning are common, to more dynamic methods of interacting with geographic data. Drill down the hierarchy from country to state to county. Navigate through and analyze geographic data using familiar map interfaces in combination with other charts, filters, heat maps, and crosstabs components.

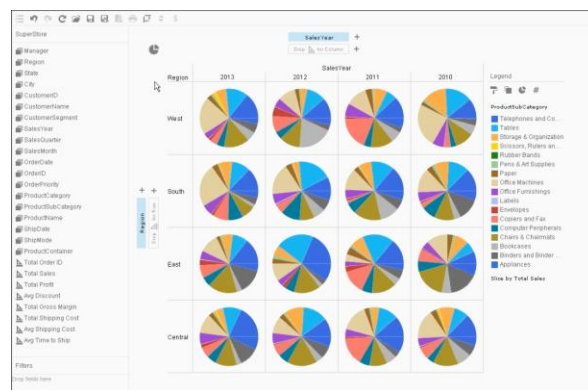
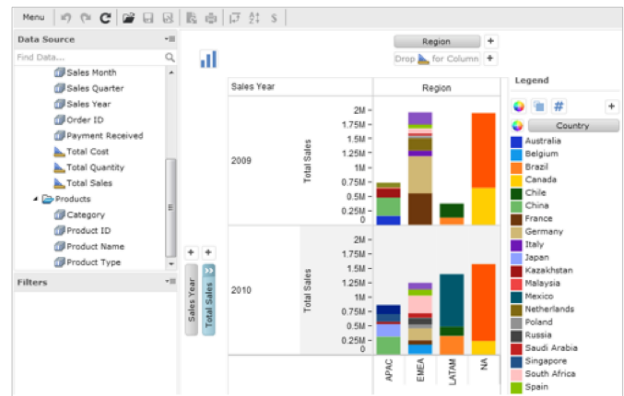
## Visual Analysis

Visual Analysis allows report developers and end users to easily transform their data into rich visualization. Visual Analysis is now able to be added as a component in JDashboards. JReport 13.1 also improves Visual Analysis in the way data is presented.

New smart layout options allow users to scale the data in a chart by height, width or a combination of both, while automatically formatting the layout for clean presentation and easy interaction.

With instant visual feedback and on-screen drag and drop actions, Visual Analysis lets

users quickly adjust the dynamics of their data visualization resulting in faster discovery of actionable information. Choose a data source, and then you're ready to drag in dimensions and measures, changing them on the fly to see your data from different angles. Powered by high performance in-memory cubes, Visual Analysis



lets you quickly change a bar chart to a line chart to a pie chart and more, with a click of a button. The intuitive interface requires a minimal learning curve with no formal training for end users. Visual Analysis gives users an immediate benefit with a self-service analysis approach to data visualization.

# Advanced Data Visualization and Performance

JReport 13.1 enhances its powerful data visualization capabilities via robust charts, intuitive on-screen interactions, and enhanced usability to help you get more out of your data. JReport 13.1 provides enhancements to over 40 chart types and styles, and introduces support for heat maps and scrollable real-time charts. Now you can



choose from standard charts like bar, line, pie or scatter charts as well as more advanced charts like bullet, scatter, bubble, and even live motion charts. Tables, crosstabs, and maps can also be used to supplement the different chart types and create a more comprehensive data view. Performance and scalability also get a boost for visualizing extremely large sets of data.

Large crosstabs are now able to perform at orders of magnitude faster due to incremental data fetching and in-memory cube technology. In addition, chart rendering and filtering on large data sets are enhanced for higher performance. Finally, scalability is ramped up for running a high volume of interactive reports and dashboards on JReport Server Clusters.

## JDashboard

JDashboard now supports Visual Analysis components for in-depth data analysis. With JDashboard, end users can create and interact with highly visual dashboards without the help of a developer. JDashboard provides intuitive features for mashing up different components pulled in from a convenient Component Library. Any number of prebuilt components can be dragged and dropped into dashboards, and you have the option to reuse your



existing reports or report components in your dashboards. JDashboard also gives you the flexibility to pull external resources into your dashboards and easy integration with 3rd party components like OpenStreetMap, Google Maps, or any other web pages that you choose. Like JReport, JDashboard is highly interactive, making data exploration a snap. Onscreen filters, slider controls, drill downs, and more can give you a more granular view of your data. Changing the course of your analysis is as easy as removing or modifying filters in a single click.

## JReport Mobile

View dashboards anytime, anywhere directly from your iPad or iPhone with JReport Mobile. The app's native iOS implementation allows you to intuitively work with data using touch and gestures for on-the-go exploration and visualization of your data



through interactive, animated charts. You can also scroll through detailed data in the rows and columns of your crosstab and table components for easy data discovery. Additionally, you have the flexibility to select from different chart types to see information from alternate points of view. Mobile visualization empowers you to make better business decisions.

## JReport Server Live

JReport Server Live is a high performance report server able to seamlessly integrate with any application and scale to any workload. Provide complete report management, distribution, administrative, and monitoring functionality with unmatched reliability into your application. Get unparalleled ad hoc reporting, web reporting, page reporting, and dashboard solutions with JReport. Scale your reporting capabilities from single-CPU to large, multi-CPU and clustered server environments. Scaling up is as simple as plugging in a new server, powering it up, and instantiating JReport Service Clusters, which automatically recognizes the new server and immediately begins utilizing it to process and balance workloads. JReport 13.1 continues to provide a range of options for connecting to data sources. JReport now integrates with Amazon Redshift, a fully managed, petabyte-scale data warehouse service, and Amazon RDS, a fully managed relational database service.

Big data sources MongoDB and Apache Hive are also supported in JReport 13.1. Additionally, JReport Server Live is able to generate dashboards and reports with components rendered using either Flash or HTML5. By supporting all popular client side technologies, JReport gives you the flexibility to meet any user requirement or deployment scenario and gives you a choice to deploy in any user application framework.

## Want To Learn More?

Contact us for a **Live Custom Demo of JReport 13.1**.

**Email:** [sales@jinfonet.com](mailto:sales@jinfonet.com)

**Phone:** 240-477-1000

[Click for Live Chat](#)

## Technical Requirements

### Hardware/OS Requirements:

- Intel P4 Xeon 3.0 GHz
- Windows, Unix, Linux, z/Linux
- 2GB of RAM minimum
- 1GB of available hard disk space
- Java VM JDK 6 or above

### Web Browser Support:

- Internet Explorer 9 or above
- Google Chrome 23 or above
- Firefox 20 or above



Copyright © 2015 Jinfonet Software, Inc.

Jinfonet Software  
2275 Research Blvd  
Rockville, MD 20850

Tel: +1 240-477-1000  
Web: [www.jinfonet.com](http://www.jinfonet.com)